



# AutoPilot Installer

*for*

*Windows Server 2003*

*Windows Server 2008*

*Server Core Installation Option of Windows 2008*

***Quick Installation Manual***

Copyright © 2008 Emulex. All rights reserved worldwide. No part of this document may be reproduced by any means or translated to any electronic medium without the prior written consent of Emulex.

Information furnished by Emulex is believed to be accurate and reliable. However, no responsibility is assumed by Emulex for its use; or for any infringements of patents or other rights of third parties which may result from its use. No license is granted by implication or otherwise under any patent, copyright or related rights of Emulex.

Emulex, AutoPilot Installer, BlockGuard, cLAN, FabricStream, FibreSpy, Giganet, HBAnyware, InSpeed, IntraLink, LightPulse, MultiPulse, SAN Insite, SBOD and Vixel are registered trademarks, and AutoPilot Manager, Critical Connectivity Solutions, EZPilot, SLI and VMPilot are trademarks of Emulex. All other brand or product names referenced herein are trademarks or registered trademarks of their respective companies or organizations.

Emulex provides this manual “as is” without any warranty of any kind, either expressed or implied, including but not limited to the implied warranties of merchantability or fitness for a particular purpose. Emulex may make improvements and changes to the product described in this manual at any time and without any notice. Emulex assumes no responsibility for its use, nor for any infringements of patents or other rights of third parties that may result. Periodic changes are made to information contained herein; although these changes will be incorporated into new editions of this manual, Emulex disclaims any undertaking to give notice of such changes.

#### DH-CHAP Notice.

License: Copyright (c) 1998-2006 The OpenSSL Project. All rights reserved. This product includes software developed by the OpenSSL Project for use in the OpenSSL Toolkit. (<http://www.openssl.org/>) SSLeay License: Copyright (C) 1995-1998 Eric Young (eay@cryptsoft.com) All rights reserved. This product includes cryptographic software written by Eric Young (eay@cryptsoft.com). This product includes software written by Tim Hudson (tjh@cryptsoft.com).

#### Windows DH-CHAP Notice.

Derived from the RSA Data Security, Inc. MD5 Message-Digest Algorithm.  
Copyright (C) 1991-2, RSA Data Security, Inc. Created 1991. All rights reserved.

Emulex, 3333 Susan Street  
Costa Mesa, CA 92626

## Introduction

AutoPilot Installer<sup>®</sup> for Emulex<sup>®</sup> Storport Miniport drivers provides installation options that include simple installations with a few mouse clicks, custom unattended installations that use predefined script files and text-only installations. AutoPilot Installer is included with Emulex drivers and utilities in Windows executable files that you can download from the Emulex Web site.

There are two types of driver kits that can install the Emulex Storport Miniport driver and utilities:

- **Full Installation Driver kit (full driver kit)** - Includes the Emulex Storport Miniport driver and the complete HBAnyware utility set, including a Graphical User Interface (GUI) and a Command Line Interface (CLI). The full driver kit also provides an option to create AutoPilot Installer kits that you can customize and distribute on your network. Although the full driver kit will not install on the Server Core installation option of Windows Server 2008 (Server Core), it can be used to create kits for those platforms.
- **Core Installation Driver kit (core driver kit)** - Includes the Emulex Storport Miniport driver and the HBAnyware utility CLI, but not the HBAnyware utility GUI. The core driver kit is required for use with Server Core platforms. You can only customize the core driver kit on the system where it is installed. It cannot be used to create AutoPilot Installer Kits for other platforms.

Run one of the driver kit installers to extract all of the software needed for an installation, then complete the installation using AutoPilot Installer. You can install a driver by any of the following methods:

---

**Note:** These installation methods are not mutually exclusive.

---

**Hardware-first installation.** At least one Emulex adapter is installed before you install the Emulex drivers and utilities.

**Software-first installation.** You can install drivers and utilities using AutoPilot Installer prior to the installation of any adapters. You do not need to specify the model of any adapters to be installed later. The appropriate drivers and utilities automatically load when you install the adapters.

**Utility Only update.** If the Storport Miniport driver in the driver kit is the same version as what is already installed on the system, you can reinstall or update the previously installed utility without reinstalling the Storport Miniport driver.

**Text-Only installation.** Text-based installation mode is used automatically when AutoPilot Installer is run on a Server Core system.

**Network installation.** You can place the driver kit installers on a shared network drive and install them across your local area network (LAN). You can use the full driver kit to create your own AutoPilot Installer kits for network-based installation. Network-based installation is often used in conjunction with unattended installation and scripting. This allows you to configure and install the same driver and utility versions on all the hosts in a SAN.

**Unattended installation.** You can run the driver kit installers and AutoPilot Installer with no user interaction from a command line or script. Unattended installation works for both hardware-first and software-first installations and with both the full driver kit and the core driver kit. An unattended installation operates in silent mode (sometimes referred to as quiet mode) and creates an extensive report file with installation status.

---

**Note:** Complete driver and utilities documentation may be downloaded from the Emulex Web site ([www.emulex.com](http://www.emulex.com)). Click **Support** at the top of the Web page and navigate by clicking the appropriate links.

---

## Prerequisites

---

- One of the following operating systems must be installed:

---

**Note:** Check the Emulex Web site for required updates to the Windows operating system or the Microsoft Storport driver.

---

- Windows Server 2003 SP2 running on an x86, x64 or Itanium server.
- Windows Server 2008 running on an x86, x64 or Itanium 64-bit server.
- Server Core installation option of Windows Server 2008 running on an x86 or x64 server.
- Windows Vista SP 1 running on an x86 or x64 system.
- Minimum 512 MB memory.
- Minimum Software Requirements: AutoPilot Installer will not let you perform an installation if the minimum Windows service pack or Microsoft Storport driver update is not installed.

## Changing Driver Types

---

If you currently use a SCSIport Miniport or FC Port driver, the driver will be replaced when you install Storport Miniport driver version 2.10. Storport Miniport driver version 2.10 will be installed for all HBAs on the server. You will also lose your customized driver parameters, persistent bindings, LUN masking and LUN mapping. The default parameters set with AutoPilot Installer will usually be the best options. However, you may want to note your current settings before you install Storport Miniport driver version 2.10. After the installation, you can then update your customized driver parameters.

---

**Note:** This update process can leave files associated with old driver kits on your system. After running AutoPilot Installer and restarting your system, you may be required to uninstall old driver or utility program entries. Follow the procedures in the "Uninstalling Programs" section in the Storport Miniport driver User Manual. Ensure you delete only previous driver and utility versions.

---

## Driver Kit Installer Overview

---

The driver kit installer is an executable file that self-extracts and copies the AutoPilot Installer, Storport Miniport driver and HBAnyware utility software onto your system:

After the driver kit is installed, you have three options:

- Automatically run AutoPilot Installer immediately. This is the default option. See page 3 for more information.
- Explicitly run AutoPilot Installer later on your system. See page 4 for more information.
- Create an AutoPilot Installer kit that can be customized and used to run AutoPilot Installer on your system or another system. See page 5 for more information.

---

**Note:** The third option is only available when installing the full driver kit. While the full driver kit cannot be installed on Server Core systems, it can be used to create AutoPilot Installer Kits for those systems.

---

## AutoPilot Installer Overview

---

AutoPilot Installer features include command line installation, compatibility verification, driver and utility installation, silent installation, utility-only installation, driver diagnostics and adapter management. AutoPilot Installer runs after the driver kit is installed. It can be run by:

- Continuing the installation process after the driver kit installation completes.
- Interactive installation at a later time.
- Unattended installation (see the Storport Miniport User Manual for more information).

## Text-Only Installation Overview

---

Text-based installation mode is used automatically when AutoPilot Installer runs on a server with the Server Core installation option of Windows Server 2008. During text-based installations, AutoPilot Installer interacts through a command prompt window. AutoPilot Installer notifies you when the driver is installed and also gives you a chance to abort the installation.

Whether it is launched from the command line or started programmatically, Windows always starts AutoPilot Installer as a separate stand-alone task. This means that AutoPilot Installer will have its own command prompt window and cannot access others.

## Installing the Driver Kit

To install either the full driver kit or the core driver kit:

Download the driver kit installer from the Emulex Web site to your system. There is one driver kit installer for the full driver kit and one driver kit installer for the core driver kit. Only one driver kit may be installed on any system. The driver kit installer is an executable file with a name similar to storportminiportkit\_2-10a7-1c.exe for the full driver kit, or storportminiportcorekit\_2-10a7-1c.exe for the core driver kit.

Once you download the driver kit installer, you have several options:

- For an automatic interactive installation without customization, see page 3.
- For control of all interactive installation settings, see page 4.
- To create your own AutoPilot Installer kits and deploy them, see page 5.
- For an unattended installation with AutoPilot Installer, see the Storport Miniport driver User Manual.

## AutoPilot Installation Procedures

### Running a Software Installation Interactively

---

There are three options when performing an installation interactively. These options assume you have already downloaded the driver kit installer from the Emulex web site.

#### Option 1: Automatically Run AutoPilot Installer

Use this option unless you have specific configuration needs. This option allows you to complete a driver kit installation and AutoPilot installation with a few simple mouse clicks.

1. Double-click the driver kit installer. (See the Storport Miniport driver User Manual for information on command line installations. A Welcome page is displayed with driver kit version information and Emulex contact information.
2. Click **Next** to proceed to the Installation Options page.

For each installation option, the default installation location for that option is displayed. Browse to a different location, if desired.

- For the core driver kit, there is only one installation option: Perform AutoPilot Installation.
- For the full driver kit, you have an additional option to Create AutoPilot Installer Kits. The default option is Perform AutoPilot Installation only.

3. Click **Install** to continue the installation.

The Progress dialog box is displayed. After all tasks complete, a Finish page is displayed. The Start AutoPilot Installer box is automatically selected.

4. Click **Finish**. AutoPilot Installer is run automatically. AutoPilot Installer will complete one of the installations:
  - Hardware-First Installation or Driver and Utility Update (see page 5)
  - Software-First Installation (see page 8)
  - Utility-Only Installation (see page 8)

### **Option 2: Run AutoPilot Installer Separately**

This option is recommended to:

- Change installation settings, such as the HBAnyware management mode, for a limited number of systems.
- Familiarize yourself with AutoPilot Installer configuration options.
- Test a configuration file that you created as part of Option 3.

To access these features, you run AutoPilot Installer after driver kit installation is done. This allows you to change the configuration options supplied to AutoPilot Installer (see below).

1. Perform steps 1 through 3 for Option 1.
2. Clear the **Run AutoPilot Installer** check box on the Finish page.
3. Click **Finish**. The driver kit installer exits.

After the driver kit installation is finished, change the configuration by changing the configuration file or entering parameters on the command line (see the Storport Miniport driver User Manual for more information).

Once you have finished this step, you can run AutoPilot Installer at a later time, using either of the following methods: (If you are supplying options via the command line, you must use the second option.)

- Select **Programs>Emulex>AutoPilot Installer** in the Start menu.
- Run AutoPilot Installer from a command line by running

```
"C:\Program Files\Emulex\AutoPilot Installer\APInstall.exe"
```

---

**Note:** The location of APInstall.exe may differ on your system, depending on your system's Program Files location. You may also specify a different location when you install the driver package.

---

### Option 3: Create an AutoPilot Installer Kit

This option is recommended to install the same customized configuration on multiple systems in your SAN.

1. Run the driver kit installer. The Installation options page is displayed.
2. Select the **Create AutoPilot Installer Kits** option.
3. Clear the **Perform AutoPilot Installation** option unless you also want to run AutoPilot Installer using Option 1 or Option 2 as previously described. The Create AutoPilot Installer Kits option will not install any additional programs on your system. Instead, files will be copied to an Emulex folder in your Documents folder, unless you choose a different location. The files can be used to create AutoPilot Installer Kits. An AutoPilot Installer Kit is a folder containing APInstall.exe and other files. You run this copy of APInstall.exe from the command line.

After the driver kit installer is finished, you'll typically find APInstall.cfg in:

```
Documents\Emulex\AutoPilot Installer Kit version\Installers
```

where *Documents* is your Documents folder (named "My Documents" in Windows Server 2003 or "*username*\Documents" in Windows Server 2008/Vista) and *version* is the driver package version identifier. You can specify a different AutoPilot Installer kits folder when you select the Create AutoPilot Installer Kits option.

See the Storport Miniport driver User Manual for more information.

## Hardware-First Installation or Driver and Utility Update

---

The driver kit installer must be downloaded from the Emulex Web site and installed. Either the full or the core package may be installed; only one can be installed on a system.

---

**Note:** To update the Storport Miniport driver, begin the following procedure at step 2.

---

To perform a hardware-first installation:

1. Install a new Emulex adapter and power-on the system. If the Windows Found New Hardware wizard is displayed, click **Cancel** to exit. AutoPilot Installer performs this function.

---

**Note:** If there are multiple adapters in the system, the Windows Found New Hardware wizard appears multiple times. Click **Cancel** to exit the wizard each time it appears.

---
2. Run AutoPilot Installer using any of the options listed in the "Running a Software Installation Interactively" on page 3.
3. When the AutoPilot Installer Welcome page appears, select an adapter in the list and click **Next**. Installation continues. Specific considerations:
  - If you are replacing a SCSIport Miniport or FC Port driver, an Available Drivers list will be displayed for your review. Click **OK** on this window.
  - If you are updating the driver and the utility, your existing management modes and port settings will be used, unless otherwise specified in the configuration file. These settings will be pre-selected but can be changed. Set or change settings, then click **Next**.
  - If you are **initially** installing a vendor-specific version of the Emulex driver installation program, a Driver Configuration page may be displayed. This page includes one or more windows with questions that you must answer before continuing the installation process. In this case, answer each question and click **Next** on each window to continue.

4. If the Utilities Installation page appears (as seen in Figure 1), select how adapters (local and remote) are managed by the HBAnyware utility.

---

**Note:** The display of the Utilities Installation page is optional and based on settings on the AutoPilot Installer command line or in the AutoPilot Configuration file. See the Storport Miniport driver User Manual for more information.

---

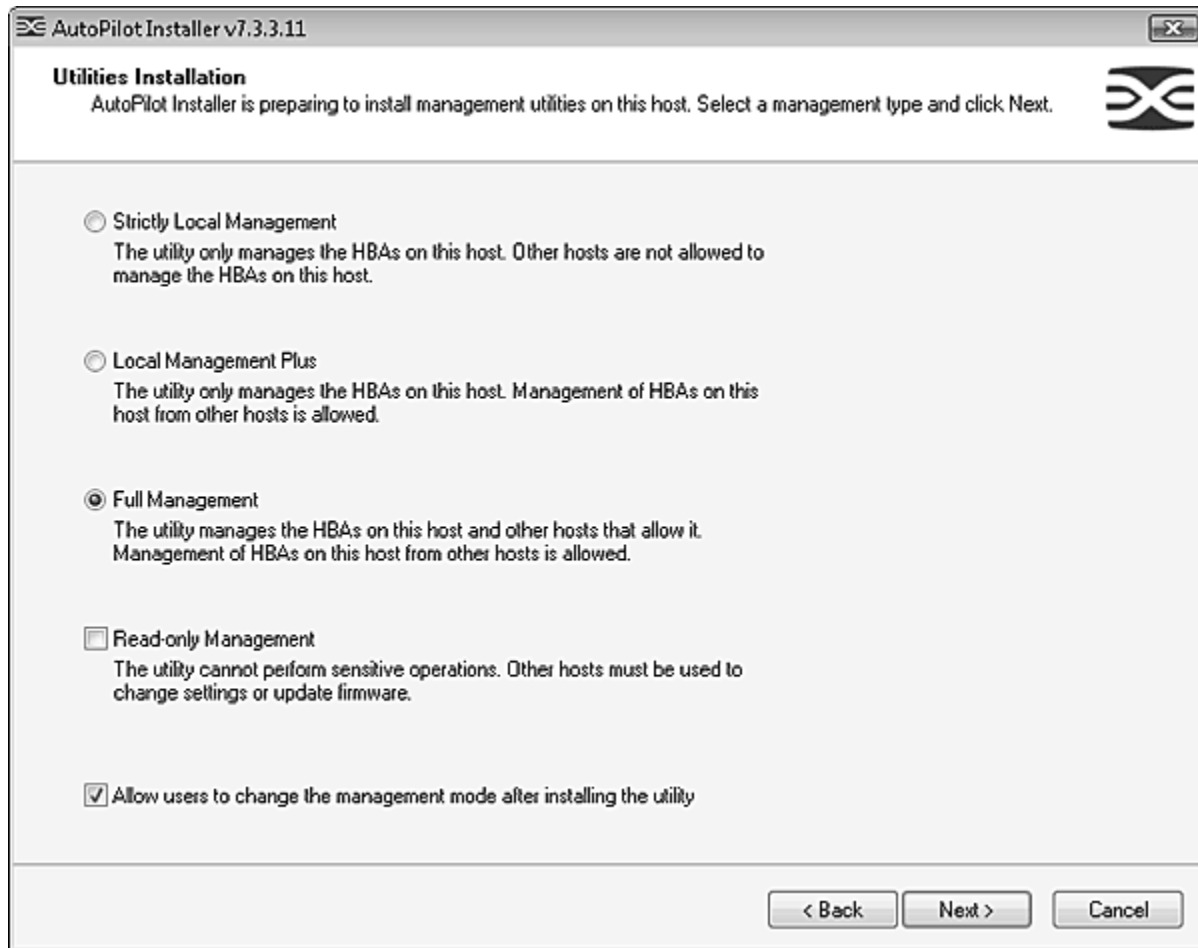


Figure 1: Utilities Installation Management Mode Setup

5. Click **Next**. Installation automatically continues to completion. A dialog box will be displayed if Windows requires a reboot. View the progress of the installation. Once the installation is successful, a Finish page appears.
6. View or print a report, if desired.
  - View Installation Report - The installation report is a text file with current Emulex adapter inventory, configuration information and task results.
  - Print Installation Report - The Windows print dialog is displayed to select options for printing the installation report.
7. Click **Finish** to exit AutoPilot Installer. If your system requires a reboot as indicated in step 5, you must do so before using the drivers or utilities.

## Software-First Installation

---

The driver kit installer must be downloaded from the Emulex Web site and installed on your system. Either the full or core driver package may be installed.

**Note:** Software-first installations should not be used with Windows Server 2008 or Windows Vista.

---

To perform a software-first installation:

1. Run AutoPilot Installer using any of the options listed in the “Running a Software Installation Interactively” on page 3. The following message appears:

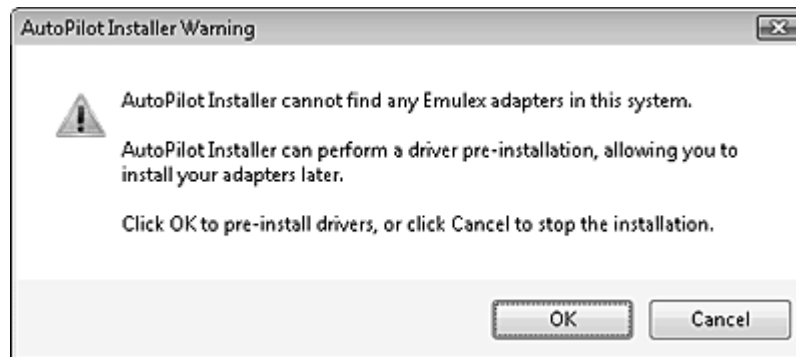


Figure 2: AutoPilot Installer Warning (Software-First Installation)

2. Click **OK**. A Welcome page appears.
3. Click **Next**. Installation automatically completes.  
View the progress of the installation. Once the installation is successful, a Finish Page appears.
4. View or print a report, if desired.
  - View Installation Report. The installation report is a text file with current Emulex adapter inventory, configuration information and task results.
  - Print Installation Report - The Windows print dialog is displayed to select options for printing the installation report.
5. Click **Finish** to exit AutoPilot Installer.

## Utility-Only Update

You can reinstall or update a utility without reinstalling the Storport Miniport driver. This option is only available if the Storport Miniport driver in the driver kit installer is the same version as the driver that is already installed on the system.

For attended hardware-first utility updates:

1. Run AutoPilot Installer using any of the options listed in the “Running a Software Installation Interactively” on page 3.

- When the AutoPilot Installer Welcome page appears, click **Next**. The Driver Installation Issue page is displayed.

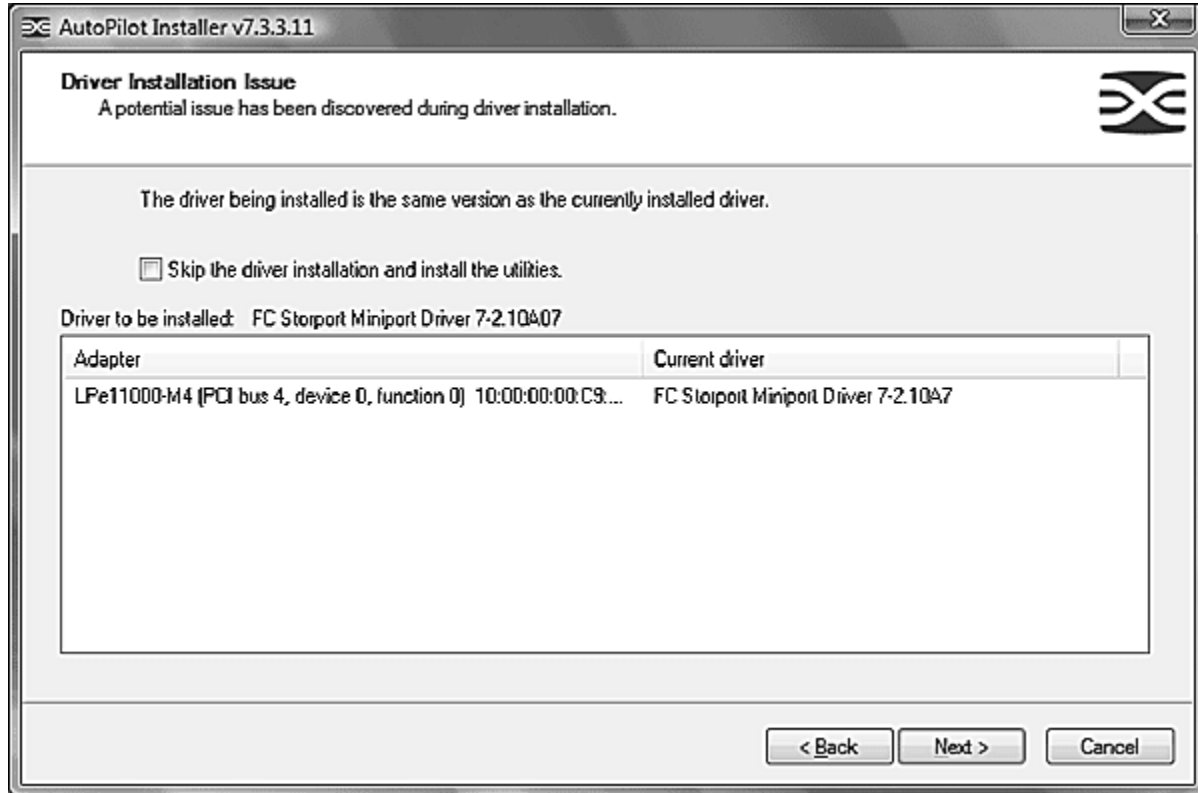


Figure 3: Driver Installation Issue

- Select the **Skip the driver installation and install the utilities** check box and click **Next**. To stop installation, click **Cancel**.
- View or print a report, if desired.
  - View Installation Report. The installation report is a text file with current Emulex adapter inventory, configuration information and task results.
  - Print Installation Report - The Windows print dialog is displayed to select options for printing the installation report.
- Click **Finish** to exit AutoPilot Installer. If the system needs to reboot, you are prompted to do so after you click **Finish**.

For software-first utility updates:

- Run AutoPilot Installer. A dialog appears asking if you want to perform a software-first installation of the drivers and utilities, or just an installation of utilities.
- Select **Utilities Only**. Installation proceeds. View the progress of the utility installation. Once the utility installation is successful, a congratulations window appears.
- View or print a report, if desired (see details in step 4 of the previous procedure).
- Click **Finish** to exit AutoPilot Installer.

## If the Installation Fails

If the installation fails, the Diagnostics window appears. To view the reason an adapter failed, select the adapter row. The reason and suggested corrective action are displayed below the list.

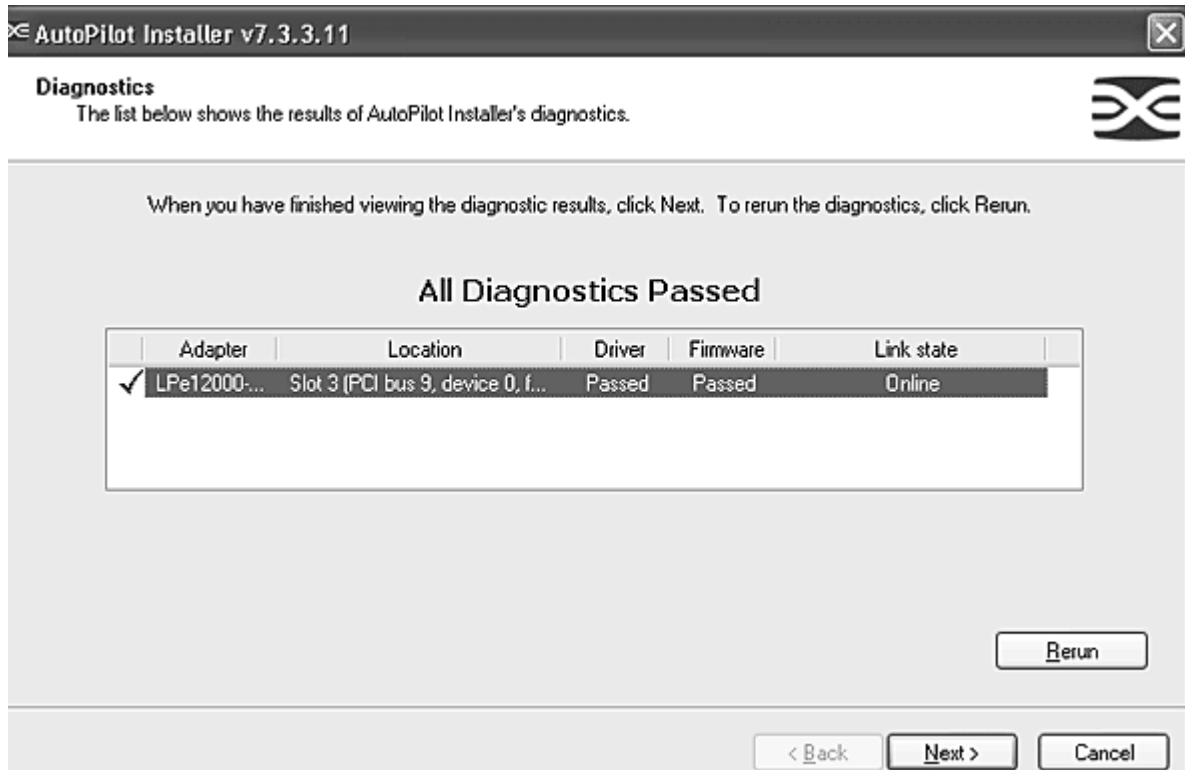


Figure 4: AutoPilot Installer Diagnostics

Perform the suggested corrective action and run AutoPilot Installer again.

---

**Note:** AutoPilot Installer can be run again from the Start menu (Programs>Emulex>AutoPilot Installer) or APInstall.exe can be run from a command prompt.

---